

VaVie Water Purifier

Installation instructions

Thank you for purchasing VaVie water purifier. Please read the instructions carefully before use. Please keep this booklet for later reference.

Model: GL01-A

No.: GL201300101

Dear customers:

Thank you for using VaVie series of products. Our water purifier can completely eliminate your worries of drinking water, ensuring you can always enjoy the fresh and healthy high - quality drinking water.

Before you use our water purifier, we recommend that you carefully read the installation instructions and accept our proposal, which can make the purifier always in its first-class condition giving fresh, high-quality drinking water. Please contact your local dealer or service center, if you encounter difficulties, or have any comments and suggestions.

China Service Hotline: +86 53288196668

Contents

Features.....	2
Flow chart.....	3
Technical parameters.....	3
Installation and commissioning.....	4
Maintenance and care.....	6
Packing List.....	8
Warranty.....	9

FEATURES:

VaVie - Gold is a direct drinking water purifier with four filtration systems. After installation, without connecting the power, users can obtain pure, safe and healthy drinking water only by opening the purified water tap.

1. After the water passes through the four filters, solid impurities in water such as suspended solids, sediments, red worms, rusts, organic molecules, soluble inorganic salts, heavy metals, bacteria, viruses, etc. can be effectively removed.

The first level: Polypropylene melt-blown filter: PP filter's pore sizes are about 5 microns. It can filter out sediment, rust, suspended solids, colloids, etc.

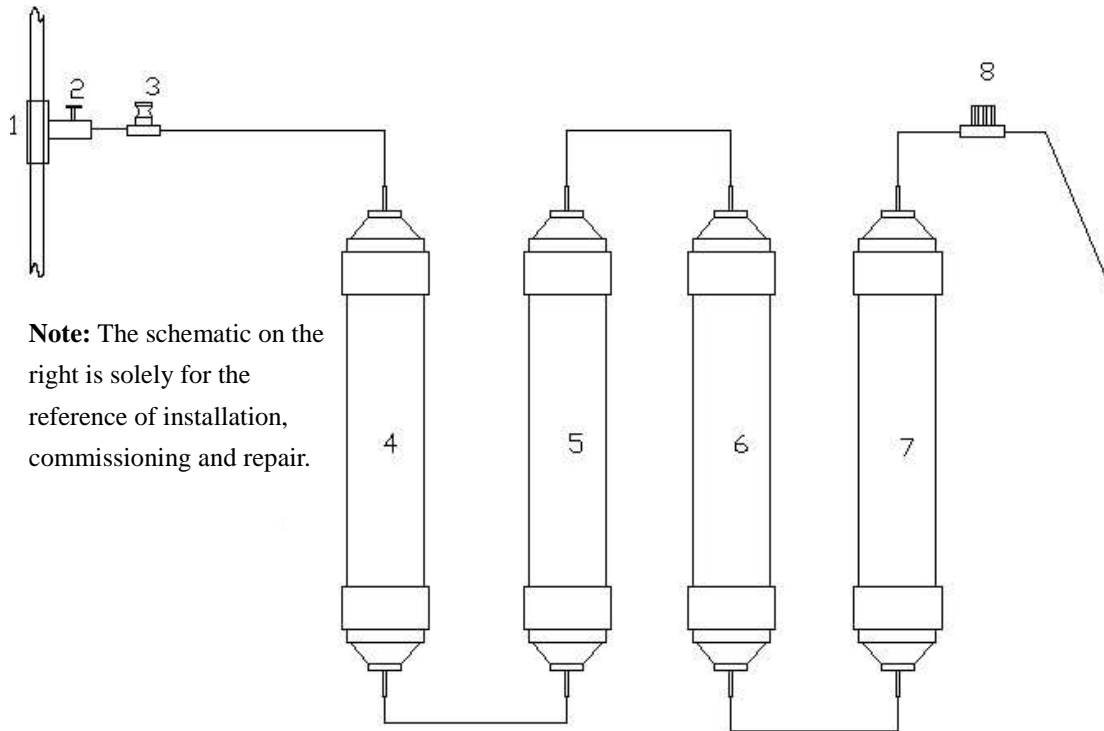
The second level: Activated carbon fiber filter (ACF): Activated carbon fiber filter's adsorption capacity is 10 times more than the common active carbon filter. Hence it can effectively absorb organics, chlorine, color, odor, heavy metals, etc.

The third level: Ultrafiltration membrane filter (UF): PVDF ultrafiltration membranes have uniform pore size with filtration accuracy of 0.01 μ m. They can remove E.coli, viruses, organic matter and other harmful substances in water and retain trace elements and minerals in water.

The fourth level: Post activated carbon filter (T33) : Absorb small organic molecules in water to improve water taste.

2. Water - contacting parts are all made of food-grade material, safe and secure.
3. Energy saving as it works without electricity and without a lot of waste water discharge.
4. Integrated sealed filter design can completely avoid the contact pollution of filters.
5. Through the technology of ultrafiltration and adsorption, tap water can become pure, delicious high-quality drinking water.
6. It is a pure physical filtration process which does not induce any pharmaceutical or chemical reaction. The purified water can be directly used for drinking purposes.
7. Easy to operate, clean and healthy water with high drinking standards can be produced immediately.
8. Compact, delicate and space-saving.

FLOW CHART:



Note: The schematic on the right is solely for the reference of installation, commissioning and repair.

1. inlet tee
2. inlet ball valve
3. reducing valve(optional)
4. PP filter element
5. activated carbon fiber filter
6. Ultrafiltration membrane filter
7. Post activated carbon filter
8. switch

Note:

When installing this unit, you may find that the location of some parts differ from this flow chart. Please rest assured that it does not affect the overall performance of the purifier.

TECHNICAL PARAMETERS:

Name	VaVie Water Purifier
Series	Gold
Model	GL01-A
Purified water flux	2.0L/Min
Water resource	city tap water

Water temperature	5~45°C
Water pressure	0.1~0.4Mpa
Rated the total quantity	3000L
Perform standard	WHO Guidelines for Drinking Water Quality (2011)
Product size	
Product weight	

Note: Specifications varies with improving model, above specifications applies only to current model.

INSTALLATION:

1. The preparation of installation tools

Pipe wrench, adjustable wrench, screwdriver, drill, hole saw, thread seal tape.

2. The choice of installation location:

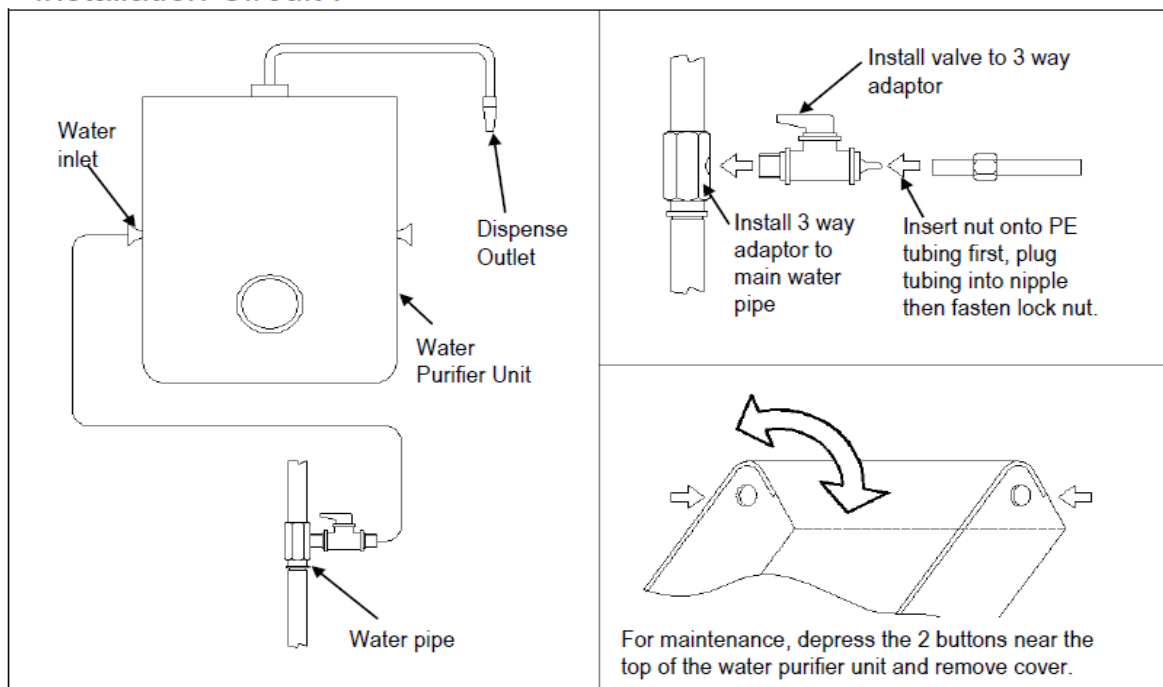
According to users' own conditions, choose a suitable installation location, and have professionals to install.

Note:

- A. Purifier cannot be tilted and objects cannot be placed on the purifier.
- B. Installation location should avoid direct sunlight, and ensure that there are reliable floor drain devices within range of 1.5 meters.

3. Installation steps:

Installation Circuit :



- 1) Ensure that the packaging is intact and parts are complete.
- 2) Turn off the main inlet ball valve and cold water ball valve.
- 3) Install inlet tee:
 - A. Take out the inlet tee from the accessories box wrapped with thread seal tapes.
 - B. Install inlet tee in the suitable location on the water pipe.
- 4) Install inlet ball valve.
- 5) Connect the inlet ball valve with PE pipe.

Determine the required length of PE pipe based on the positions of purifier and inlet. Estimate the length and connect the inlet ball valve with PE pipe.

- 6) Connect the inlet with PE pipe, switch on the valve, the purifier starts to work.

Note:

- A. For first time use, the inlet valve should be opened slowly till it is half open. Once the water flows out of the water purifier, the inlet valve can then be fully opened.
- B. After installation, the purifier should work for 15minutes and then the purified water can be used for drinking.

- 7) The placement of water purifier

This purifier can be hung on the wall or be placed into the cabinet; placing in the cabinet is recommended.

- A. Install on the wall: Choose the appropriate location on the wall. Knock in the expansion screws after drilled holes with an electric drill, and make sure the expansion screws exposed 5-8 mm, and then hang the purifier on the wall.
- B. Install into the cabinet: Directly place the purifier into the cabinet, or follow the “Install on the wall” installation method above.

- 8) The connection of pipeline (Reference to the flow chart)

PE pipe should be cut into the desired length, and then connect with the purifier.

- A. Insert one end of the PE pipe of Step 5) into the purifier’s inlet. Make sure the connection is tightened.
- B. Through PE pipe, connect the flushing port to floor drainer or to water storage container for water reuse.

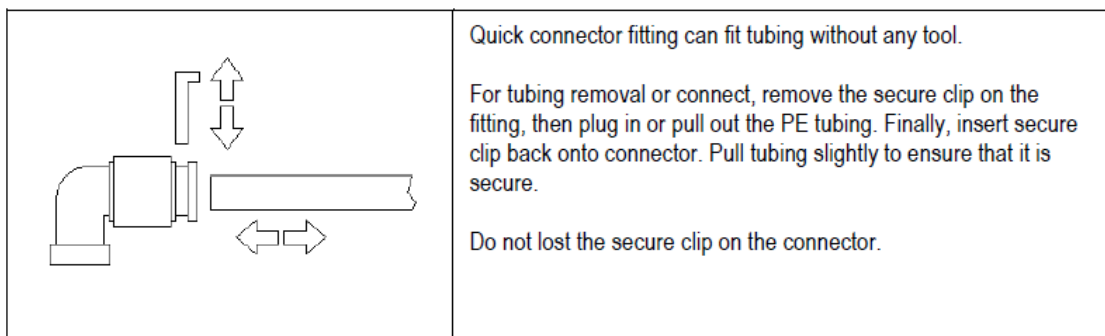
Note: The connection method of PE pipe and quick connector is as follows:

- A. Remove the retaining clip on the quick connector, and then firmly insert the PE pipe.
- B. Replace the retaining clip, and pull gently outwards PE pipe to ensure reliable connection.



◆ Installation of quick connector:

Quick connector is a pipe fitting, which can achieve rapid disassembly without any tool. It is compact, small, light, high temperature resistant, and interchangeable. The installation steps are as follows:



Note:

The retaining clip cannot be lost and to avoid leakage, the clip must be installed after connection.

4. COMMISSIONING:

- 1) Open the water ball valve of the purifier on tap water pipe.
- 2) Open the purified water valve for the pure water to flow out. Allow the dispenser to produce water continuously for 15 minutes to wash the post activated carbon filter.

Note:

During commissioning, please make attention to the operation of the purifier and pipe fittings in case of leakage.

5. MAINTENANCE AND CARE:

1. Replace the filter regularly to maintain water purity

In order to make sure every filter works properly and the water quality is up to the standard, users should reference the following time to estimate the replacement cycle (water production: 20L/day).

Name	Recommended replacement cycle(month)
PP filter	3~6
Activated carbon fiber filter (ACF)	10~12
Ultrafiltration membrane filter (UF)	18~24
Post activated carbon filter (T33)	8~12

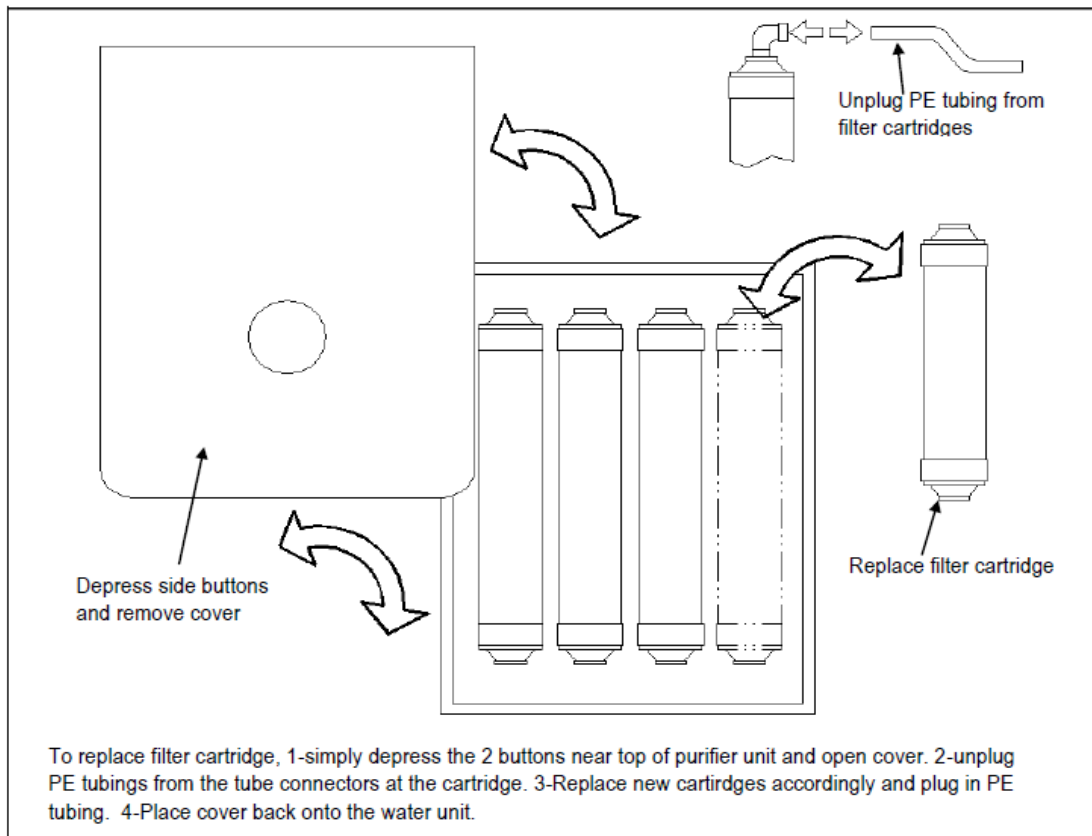
Special remind:

As the life of filter degrades due to the change of raw water temperature, raw water pressure, raw water quality, purified water usage and the use of the environment and so on, users should replace their filter according to the actual situation.

2. The replacement of filter

When serious shortage of water production is appeared, or the filters reach the service life, the filters need to be replaced. For filter replacement methods, refer to the installation of filter stated before.

Maintenance :



For the purifier with the mark of “membrane rinse” on the right side, and when you find that the water yield decreasing significantly, you can remove the “plug” on the right side. Then install the pipes supplied with water purifier, then close the valve to flush ultrafiltration filter for 5-10 minutes. After flushing and the installation of “plug”, you can find that the water yield increasing. This also can extend the life of ultrafiltration filter.

Note: If you encounter any difficulties while operating the purifier, please contact your local dealer or the company's after-sales service center.

Attention:

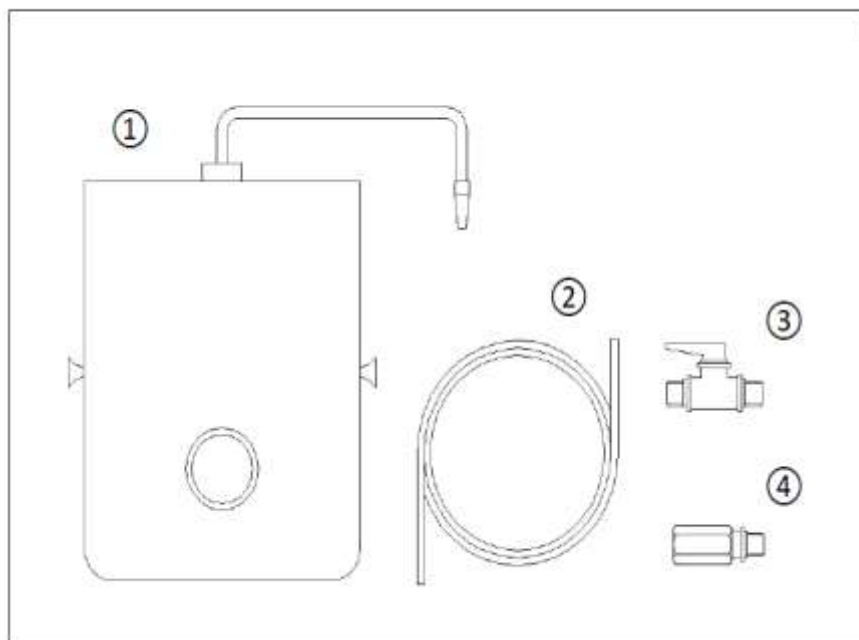
1. To avoid leakage or damage, do not remove any components of the purifier.
2. Unplug the power supply and cut off the inlet valve, if not used for a long time.

Special remind:

- A. Please release a small amount of water before using.
- B. If the dispenser is not used for a long time, please turn off the inlet valve to prevent leakage and purifier damage.
- C. Input water pressure must be in the range of 0.1 ~ 0.4Mpa.

PACKING LIST:

Package Items:



Package Items:

1. Water Purifier Unit
2. PE Tubing
3. Valve
4. 3 Way Adaptor

Parts name	Quantity	Parts name	Quantity
The host	1	Water inlet tee	1
Hanging piece	1	PE pipe	several
Plastic ball valve	1	Installation instructions	1
Component bag	1	Certificate	1
Warranty card	1	Installation card	1

Note: The packing list is a reference configuration of the product, which may change with the update of products. Please refer to the actual contents.

WARRANTY DESCRIPTION:

- 1) **Warranty period:** The warranty period is 1 year (excluding filter) from the date of purchase.
- 2) In case of water quality problems during the warranty period, it may be due to the purifier failure. Customers can take the completed warranty card and purchase invoices to local contracted service outlets for maintenance. Do not disassemble the purifier or you will lose the warranty rights. Our company does not assume any responsibility for the resulting quality problems or accidents.
- 3) The following are not within the scope of free warranty:
 - 3.1 Purifier damage due to consumers' improper use or maintenance or storage.
 - 3.2 Purifier damage due to the removal by the maintenance personnel of other than our company.
 - 3.3 No proof of purchase or the proof of purchase does not match with the product model.
 - 3.4 The purifier is damaged due to force majeure.
 - 3.5 Beyond the warranty period.
- 4) To facilitate quicker product repair, please keep the carton packaging during the free warranty period.
- 5) For non-free maintenance, we will only charge a reasonable fee for parts and materials. Our company will provide you with the best quality service.

Tritech (QingDao) Membrane Industry Co., Ltd.

Warranty card (Customers archive)

Service Hotline: 400--099--8766

Name					Zip code					
Address										
Telephone area code			Home Phone			Office Phone				
Work units										
Shop					Date of purchase					
					model					
Grade					Quality control personnel					
User confirmation	Voltage		Outlet		GFCI	Y		N		A
	V		A							
Installer Signature					customer Signature					
Suggestion										



Designed and Produced By:

TriTech Water Technologies Pte Ltd (Singapore)

Address: 2, Kaki Bukit Place, TriTech Building,
#06-00 Singapore 416180

Phone: +65 – 68482567

Fax: +65 – 68482568

Email: vavie@tritech.com.sg

Web: www.vavie.com.sg

Manufacturer:

TriTech (Qingdao) Membrane Industry Co Ltd (China)

Address: No.88 Zhu Shan Xi 6 Road, Coastal Industrial
Park, Jiaonan City of Qingdao, Shandong Province,
266400

Phone: +86 – 53288196668

Fax: +86 – 53282176668

Email: vavie@tritechgrp.cn

Web: www.vavie.com.cn